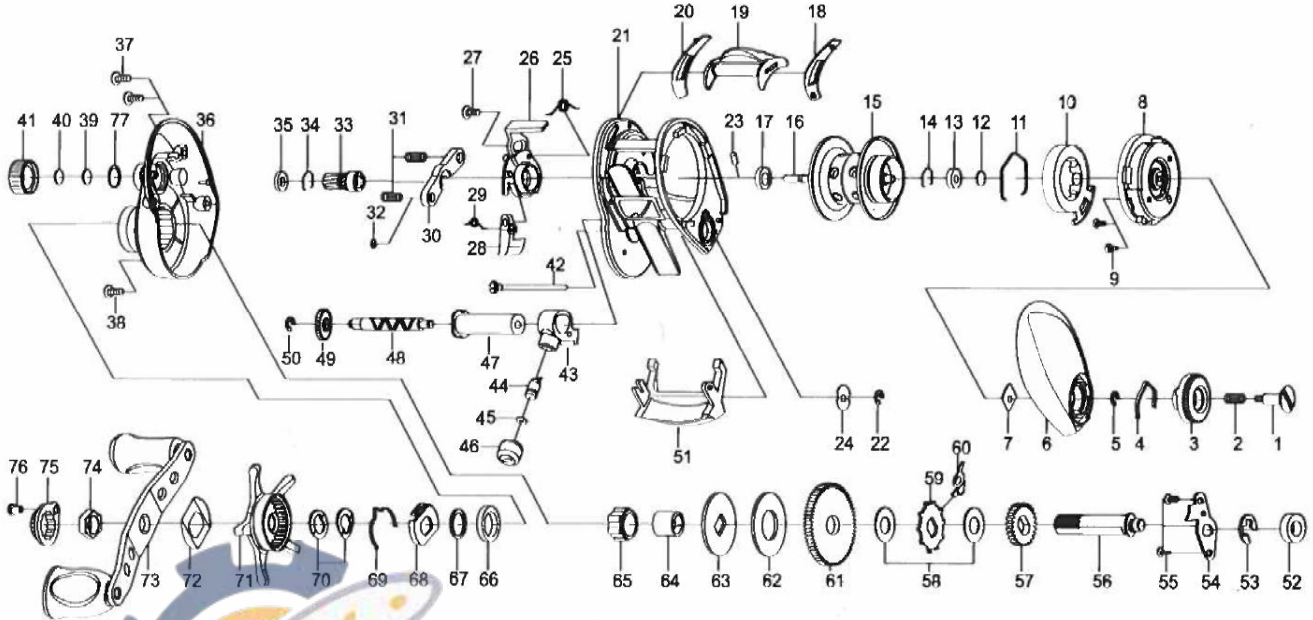


Please order by parts number, not key number  
 Veuillez indiquer le numéro de la pièce (Non "Key" No.)



# BAITCASTING REEL

# LAGUNA 100 HL



Key No.	Parts No.	Parts Name	Key No.	Parts No.	Parts Name
1	460-5420	Set plate screw (S)	41	380-1660	Cast control rap (S)
2	510-4450	Set plate spring	42	400-2531	Long screw
3	550-1610	Brake adjusting knob	43	490-1080	Line guide
4	510-5060	Brake click spring	44	400-2540	Line guide pawl
5	200-0530	Brake dial retainer (A)	45	540-3980	Washer (C)
6	230-2270	Left side plate	46	380-0780	Nut
7	410-1911	Brake dial retainer (B)	47	270-0720	Level wind guard
8	220-3000	Left set plt	48	470-1920	Worm shaft
9	460-3220	Left set plate screw	49	240-2180	Worm shaft gear
10	240-1952	Magnet holder	50	200-0530	Gear retainer
11	430-1070	Magnet holder ret	51	550-1620	Front plate
12	540-5990	Spacer (A)	52	140-1280	Ball Bearing (C)
13	140-1400	Ball bearing (A)	53	200-0580	Drive gear shaft retainer (B)
14	430-1061	Bearing retainer	54	410-2210	Drive gear shaft retainer (A)
15-17,23	700-9160	Spool assembly	55	460-4600	Drive shaft retainer screw
18	410-2150	Spacer (B)	56	460-3850	Drive shaft
19	090-0260	Clutch lever (S)	57	240-2190	Drive gear A
20	410-2140	Spacer (C)	58	540-6840	Spacer (F)
21	110-0950	Frame assembly	59	240-2530	Anti-reverse ratchet
22	200-0530	Worm shaft retainer	60	530-0840	Anti-reverse pawl
23	400-2250	Spool Pin	61	250-1311	Drive gear
24	540-6060	Worm shaft washer	62	540-6870	Drag washer
25	510-5070	Clutch cam spring (A)	63	540-6910	Key washer
26	170-1330	Clutch cam	64	150-2180	Gear shaft collar
27	460-5440	Clutch cam screw	65	140-1810	Roller clutch
28	330-2830	Cluck trip plate	66	140-1830	Ball Bearing (D)
29	510-5080	Clutch cam spring (B)	67	540-1480	Spacing washer
30	410-1920	Yoke	68	410-2220	Click leaf spring holder
31	510-4430	Yoke spring	69	510-4760	Leaf spring (A)
32	540-6020	Washer (B)	70	540-6390	Drag spring washer
33	260-1690	Pinion gear	71	320-1160	Star drag
34	430-1061	Bearing retainer	72	510-3260	Leaf spring (B)
35	140-1820	Ball bearing (B)	73	700-8390	Handle assembly (S)
36	230-2280	Right side plate	74	386-0880	Handle nut
37	460-1570	R/S plt screw	75	180-2470	Handle nut plate (S)
38	460-5450	R/S plt screw A	76	460-0450	Handle nut plate screw
39	540-6850	Spacer (D)	77	430-1080	O-Ring
40	540-4340	Spacer (E)			